

STANDARD DETAILING/ORDER SHEETS

INDEX	SHEET
Standard Order Sheet – Purlins & Rails	1
Standard Example Sheet – Purlins & Rails	2
Standard Order Sheet – Eaves Beam	3
Standard Order Sheet – Eaves Channel	4
Standard Order Sheet – Inwardly Lipped Channel Section	5
Standard Order Sheet – Cleader Rail Angle	6
Standard Order Sheet – Standard Z Sleeves	7
Standard Order Sheet – Heavy End Bay System Sleeves	8
Standard Order Sheet – Standard sleeves: Channels	9
Standard Order Sheet – Accessories	10
Standard Order Sheet – Side Rail Supports & Diagonal Tie Wires	11
Standard Order Sheet – Eaves Struts	12
Standard Order Sheet – Eaves Channel Struts	13
Standard Order Sheet – Ridge Struts	14
Standard Order Sheet – Standard Cleats	15
Standard Information Sheet – Fire Restraint Side Rail	16
Standard Order Sheet – Fire Restraint Side Rail	17
Standard Order Sheet – Apex Strut Angle Type	18
Standard Order Sheet – Channel Joint Rail	19
Standard Order Sheet – Cladding Joint Rail	20
Standard Order Sheet – Non Standard Cleats	21
Standard Order Sheet – Sigma Purlin	22
Standard Order Sheet – Sigma Purlins Sleeves	23
Standard Order Sheet – Sigma Purlins Accessories	24
Standard Order Sheet – Eaves Struts to Sigma Purlins	25
Standard Order Sheet – Standard Cleats for Sigma Purlin	26
Standard Order Sheet – Apex Strut Angle Type for Sigma Purlins	27
Standard Order Sheet – Vertical Cee Section Cladding Rail	28
Standard Order Sheet – Floor Beam Connections - Inset Cleats	29
Standard Order Sheet – Floor Beam Connections - Oversail Cleats	30

PLEASE RETAIN THIS MASTER SET AND PRODUCE COPIES FOR COMPLETION WITH YOUR REQUIRED INFORMATION AND POST/FAX TO ALBION SECTIONS LTD FOR MANUFACTURE

ALBION SECTIONS LIMITED,

Albion Road, West Bromwich, West Midlands B70 8BD.

Telephone: 0121-553 1877 Fax: 0121 553 5507

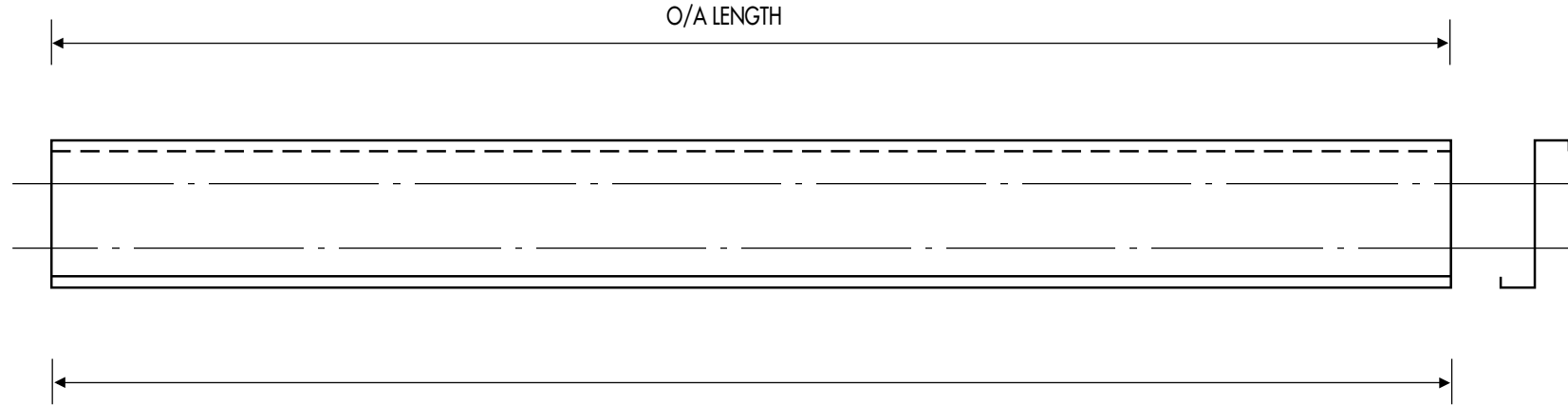


Albion Sections Limited
 COLD ROLLED SECTIONS FOR THE CONSTRUCTION & ENGINEERING INDUSTRIES
 Albion Road, West Bromwich, West Midlands, B70 8BD
 Telephone: 0121-553 1877 Fax: 0121-553 5507

STANDARD ORDER SHEET 1

PURLINS & RAILS

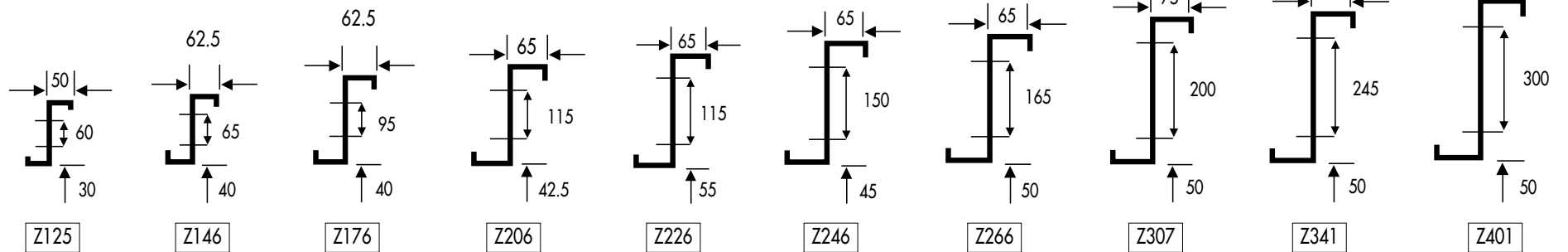
ASL Ref:



NO.	AS DRAWN	MARK
NO.	OPPOSITE HAND	MARK

SECTION NUMBER REFERENCE

HOLE SIZE (TICK).	14mm		18mm	
-------------------	------	--	------	--



COMPANY		DRAWN BY	DRAWING No	REVISION No	
COMPANY ORDER No	CONTRACT No	DATE			



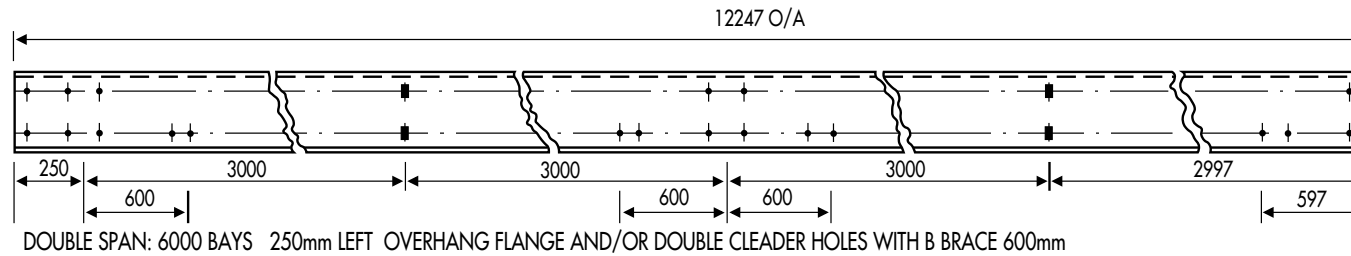
Albion Sections Limited

COLD ROLLED SECTIONS FOR THE CONSTRUCTION & ENGINEERING INDUSTRIES
 Albion Road, West Bromwich, West Midlands, B70 8BD
 Telephone: 0121-553 1877 Fax: 0121-553 5507

STANDARD EXAMPLE SHEET 2

PURLINS & RAILS

ASL Ref:

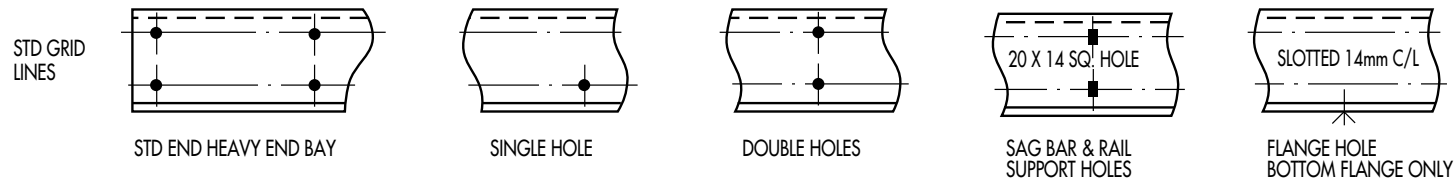


STANDARD PIERCING OPTIONS

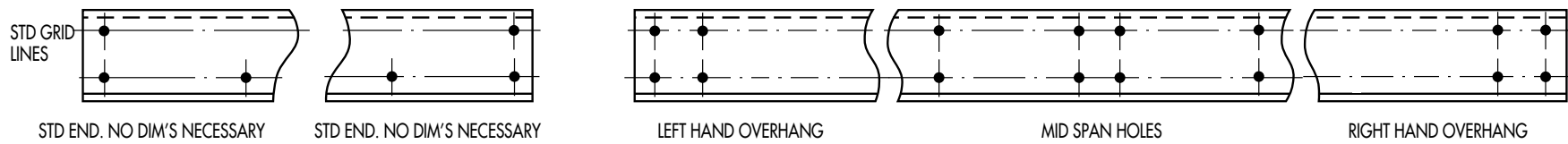
MINIMUM EDGE DISTANCE 29mm.

ALL BELOW DIMENSIONS TO C/L HOLE

Purlin and rail assembly bolts: For Sections up to and including 246 series either M12 grade 8.8 or M16 grade 4.6 may be used. Sections 266 series and above M16 grade 4.6 only. Holes 14mm for M12 bolts and 18mm for M16 bolts.



ALL BELOW DIMENSIONS TO C/L CLEAT



ALL HOLES ARE PUNCHED EITHER IN PAIRS OR ON BOTTOM ONLY OF STANDARD GAUGE LINES. CLEARANCE BETWEEN PURLINS AND RAILS AT JOINTS IS 6mm.

ALL SAG ROD AND RAIL SUPPORT HOLES ARE RECTANGULAR 20mm X 14mm. FLANGE HOLES 14mm DIA AT 33 BMK.

NOTE. SAG ROD HOLES PURLINS AT MID OR $\frac{3}{8}$ & $\frac{5}{8}$ SPAN AS REQUIRED RAILS AT MID OR THIRD POINTS AS REQUIRED

COMPANY		DRAWN BY	DRAWING No	REVISION No	
COMPANY ORDER No	CONTRACT No	DATE			



Albion Sections Limited

COLD ROLLED SECTIONS FOR THE CONSTRUCTION & ENGINEERING INDUSTRIES
 Albion Road, West Bromwich, West Midlands, B70 8BD
 Telephone: 0121-553 1877 Fax: 0121-553 5507

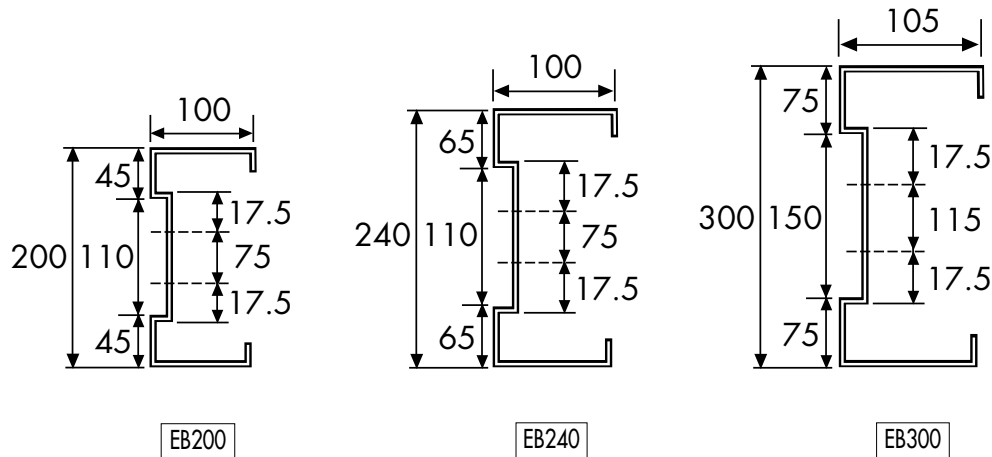
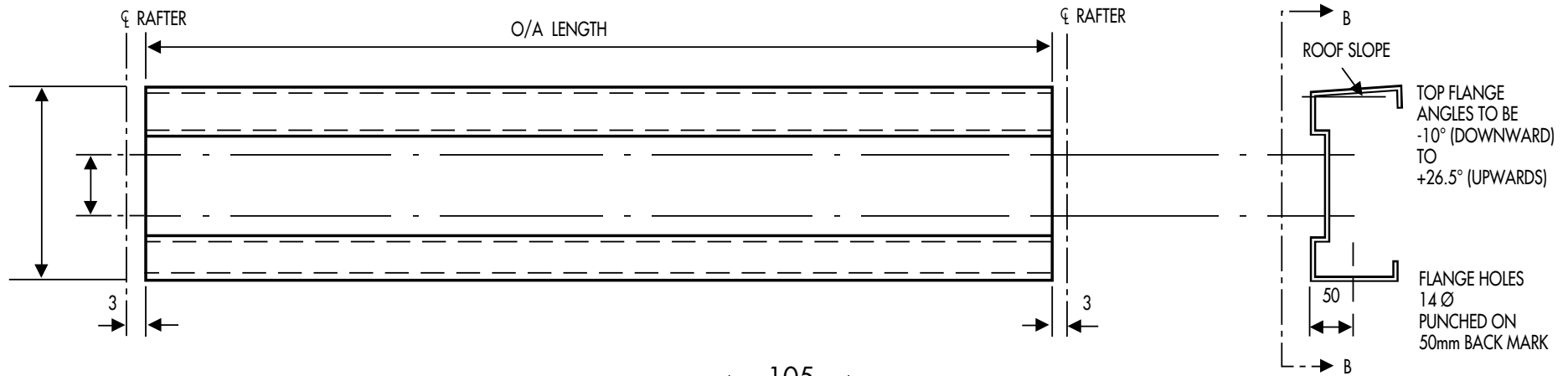
STANDARD ORDER SHEET 3

EAVES BEAM

ASL Ref:

STD WEB HOLES 18mm DIA ON GAUGE LINES
 FLANGE HOLES 14mm DIA

VIEW ON BB



SECTION NUMBER REFERENCE	TOP FLANGE ANGLE -10° TO +26.5°
--------------------------	------------------------------------

NO.	AS DRAWN	MARK
NO.	OPPOSITE HAND	MARK

COMPANY		DRAWN BY	DRAWING No	REVISION No	
COMPANY ORDER No	CONTRACT No	DATE			

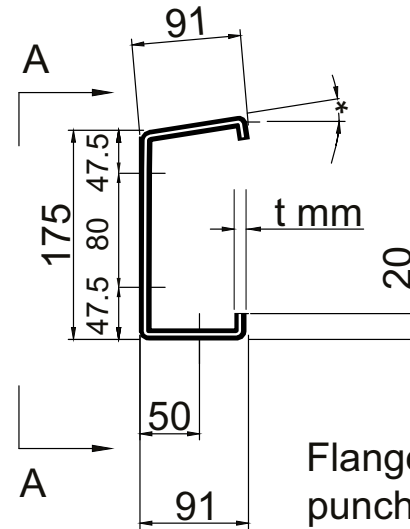
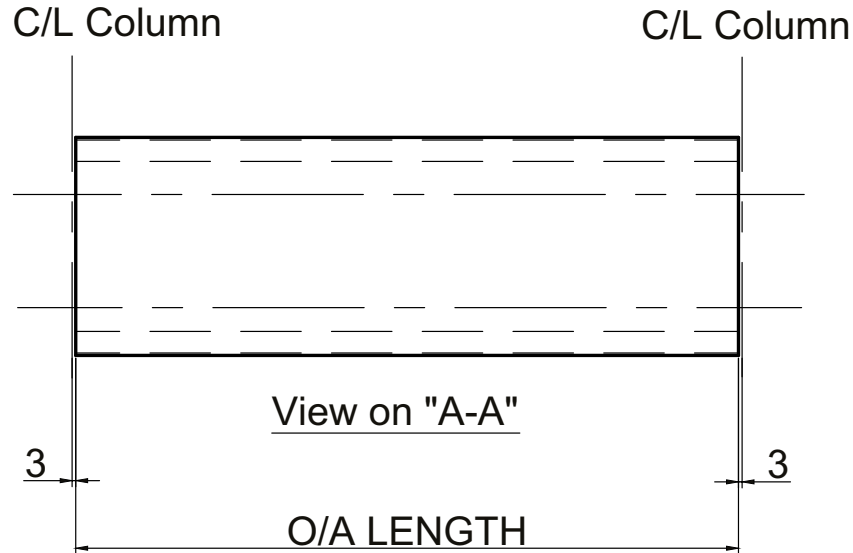


Albion Sections Limited
 COLD ROLLED SECTIONS FOR THE CONSTRUCTION & ENGINEERING INDUSTRIES
 Albion Road, West Bromwich, West Midlands, B70 8BD
 Telephone: 0121-553 1877 Fax: 0121-553 5507

STANDARD ORDER SHEET 4

ASL Ref:

EAVES CHANNEL



Flange holes Ø14
 punched on
 50mm backmark

SECTION	THICKNESS TMM
EC17518	1.8
EC17520	2.0
EC17525	2.5

* TOP FLANGE ANGLES
-10° (downward)
+ 26° (upwards)

SECTION NUMBER REFERENCE	TOP FLANGE ANGLE -10° TO +26.5°

NO.	AS DRAWN	MARK
NO.	OPPOSITE HAND	MARK

COMPANY		DRAWN BY		DRAWING No		REVISION No	
COMPANY ORDER No		CONTRACT No		DATE			



Albion Sections Limited

COLD ROLLED SECTIONS FOR THE CONSTRUCTION & ENGINEERING INDUSTRIES
 Albion Road, West Bromwich, West Midlands, B70 8BD
 Telephone: 0121-553 1877 Fax: 0121-553 5507

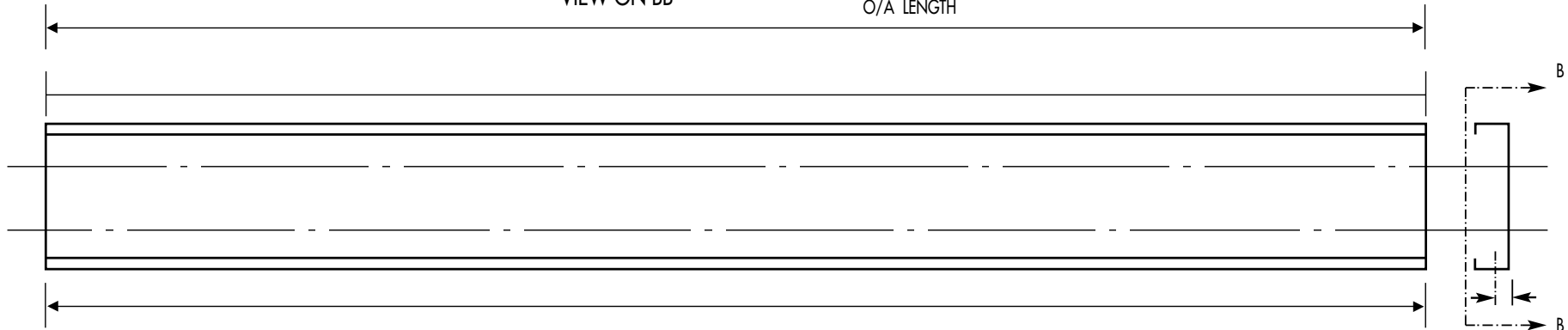
STANDARD ORDER SHEET 5

ASL Ref:

INWARDLY LIPPED CHANNEL SECTION

VIEW ON BB

O/A LENGTH

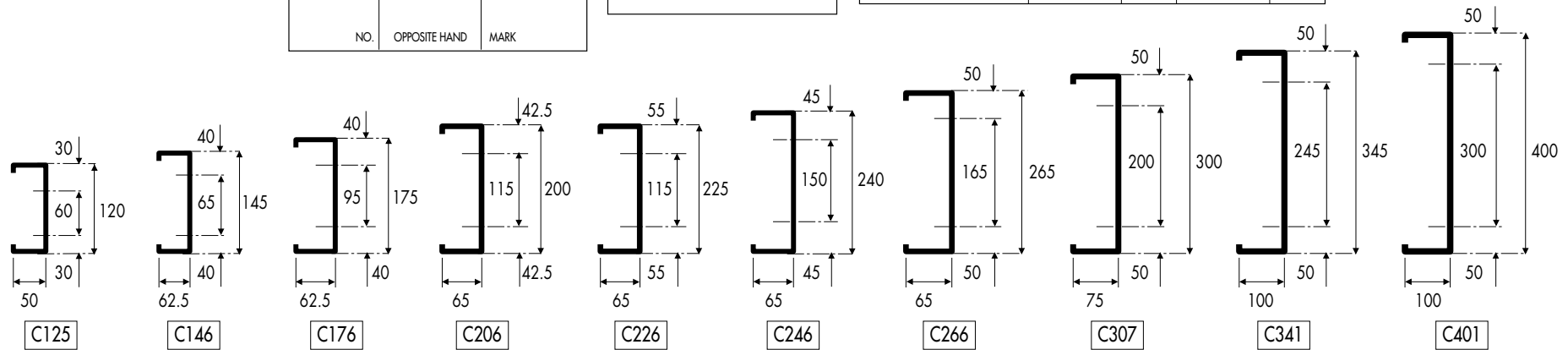


NO.	AS DRAWN	MARK
NO.	OPPOSITE HAND	MARK

SECTION NUMBER REFERENCE

HOLE SIZE (TICK).	14mm		18mm	
-------------------	------	--	------	--

14mm Ø
 33mm BACKMARK
 IF REQUIRED



COMPANY

DRAWN BY

DRAWING No

REVISION No

COMPANY ORDER No

CONTRACT No

DATE





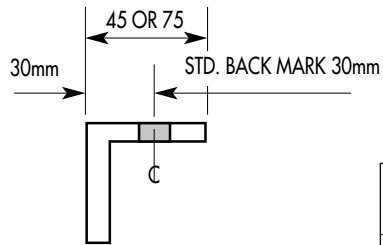
Albion Sections Limited
 COLD ROLLED SECTIONS FOR THE CONSTRUCTION & ENGINEERING INDUSTRIES
 Albion Road, West Bromwich, West Midlands, B70 8BD
 Telephone: 0121-553 1877 Fax: 0121-553 5507

ASL Ref:

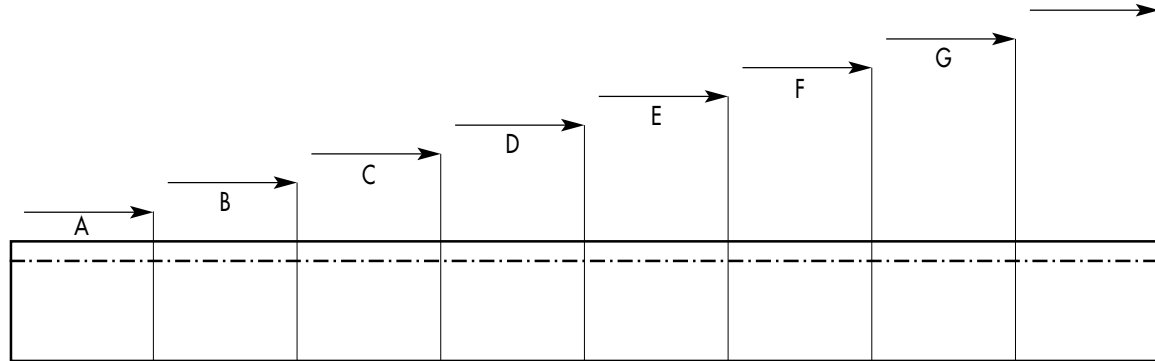
STANDARD ORDER SHEET 6

CLEADER RAIL ANGLE

DELETE WHERE APPLICABLE
45 X 45 X 2.0
75 X 75 X 2.0



ALL HOLES 14mm Ø DIAMETER
 FINISH: GALVANISED



NO. OFF	MK	A	B	C	D	E	F	G	OVERALL LENGTH

COMPANY		DRAWN BY		DRAWING No		REVISION No		
COMPANY ORDER No	CONTRACT No	DATE						



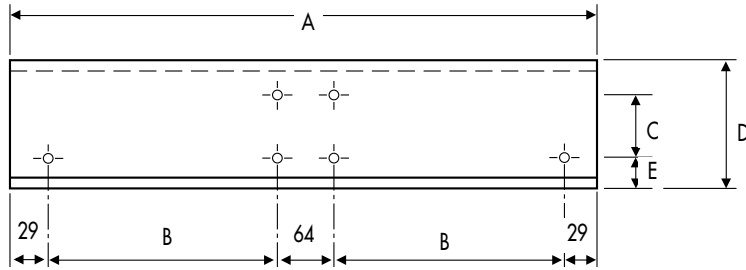
Albion Sections Limited
 COLD ROLLED SECTIONS FOR THE CONSTRUCTION & ENGINEERING INDUSTRIES
 Albion Road, West Bromwich, West Midlands, B70 8BD
 Telephone: 0121-553 1877 Fax: 0121-553 5507

ASL Ref:

STANDARD ORDER SHEET 7

ZED SLEEVES

FOR HEAVY END BAY
 SLEEVES SEE SHEET 8



Section Ref	Section Depth	A mm	B mm	C mm	D mm	E mm	Hole Dia
125	120	422	150	60	120	33	14 or 18
146	145	422	150	65	145	43	14 or 18
176	175	632	255	95	175	43	14 or 18
206	200	632	255	115	200	45.5	14 or 18
226	225	632	255	115	225	58	14 or 18
246	240	732	305	150	240	48	14 or 18
266	265	942	410	165	265	53	18
307	300	1044	461	200	300	53	18
341	345	1190	534	245	345	53	18
401	400	1400	639	300	400	53	18

SECTION	QUANTITY	MARK	HOLE DIA (14mm or 18mm)

COMPANY		DRAWN BY	DRAWING No	REVISION No	
COMPANY ORDER No	CONTRACT No	DATE			



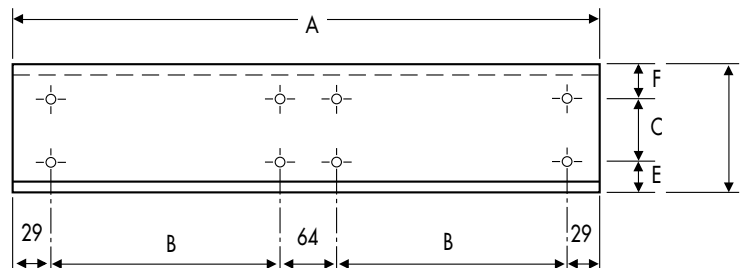
Albion Sections Limited

COLD ROLLED SECTIONS FOR THE CONSTRUCTION & ENGINEERING INDUSTRIES
 Albion Road, West Bromwich, West Midlands, B70 8BD
 Telephone: 0121-553 1877 Fax: 0121-553 5507

STANDARD ORDER SHEET 8

ASL Ref:

HEAVY END BAY SYSTEM SLEEVES



END BAY SLEEVES

Section Ref	A mm	B mm	C mm	D mm	E mm	F mm
146	802	340	65	145	43	37
176	992	435	95	175	43	37
206	1172	525	115	200	45.5	39.5
226	1172	525	115	225	58	52
246	1312	595	150	240	48	42
266	1472	675	165	265	53	47
307	1632	755	200	300	53	47
341	1870	874	245	345	53	47
401	2200	1039	300	400	53	47

HOLES MAYBE 14 OR 18MM DIAMETER UP TO AND INCLUDING 246 SERIES.
 HOLES 18MM DIA FOR 266 SERIES AND ABOVE.

SECTION	QUANTITY	MARK	HOLE DIA

INNER BAY SLEEVES

Section Ref	A mm	B mm	C mm	D mm	E mm	F mm
146	630	254	65	145	43	37
176	734	306	95	175	43	37
206	902	390	115	200	45.5	39.5
226	902	390	115	225	58	52
246	980	429	150	240	48	42
266	1010	444	165	265	53	47
307	1200	539	200	300	53	47
341	1380	629	245	345	53	47
401	1600	739	300	400	53	47

SECTION	QUANTITY	MARK	HOLE DIA

COMPANY

DRAWN BY

DRAWING No

REVISION No

COMPANY ORDER No

CONTRACT No

DATE





Albion Sections Limited

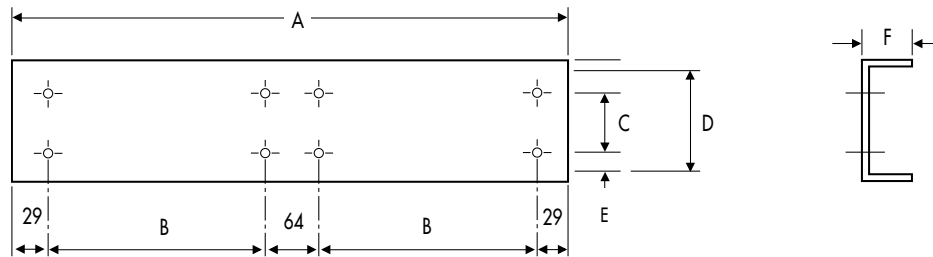
COLD ROLLED SECTIONS FOR THE CONSTRUCTION & ENGINEERING INDUSTRIES
 Albion Road, West Bromwich, West Midlands, B70 8BD
 Telephone: 0121-553 1877 Fax: 0121-553 5507

STANDARD ORDER SHEET 9

ASL Ref:

STANDARD SLEEVES: CHANNELS

Section Ref	Section Depth	A mm	B mm	C mm	D mm	E mm	F mm	Hole Dia
125	120	422	150	60	125	32.5	40	14 or 18
146	145	630	254	65	150	42.5	47	14 or 18
176	175	734	306	95	180	42.5	60	14 or 18
206	200	734	306	115	205	45	63	14 or 18
226	225	902	390	115	230	57.5	63	14 or 18
246	240	980	429	150	245	47.5	63	14 or 18
266	265	1084	481	165	270	52.5	67	18
307	300	1084	481	200	305	52.5	70	18
341	345	1202	540	245	350	52.5	73	18
401	400	1522	700	300	405	52.5	85	18



SECTION	QUANTITY	MARK	HOLE DIA (14mm or 18mm)

COMPANY		DRAWN BY		DRAWING No	REVISION No	
COMPANY ORDER No	CONTRACT No	DATE				



Albion Sections Limited
 COLD ROLLED SECTIONS FOR THE CONSTRUCTION & ENGINEERING INDUSTRIES
 Albion Road, West Bromwich, West Midlands, B70 8BD
 Telephone: 0121-553 1877 Fax: 0121-553 5507

STANDARD ORDER SHEET 10
ACCESSORIES

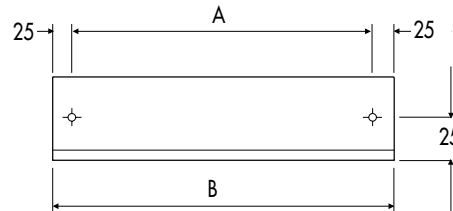
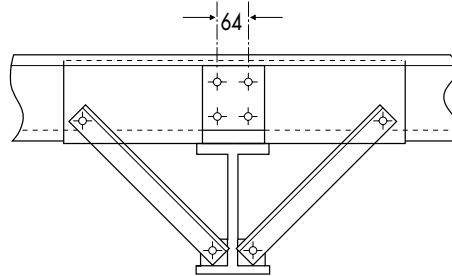
ASL Ref:

SPEED FIX ANTI SAG BARS



QUANTITY	PURLIN CRS	MARK

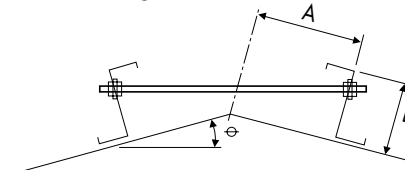
RAFTER/COLUMN STAYS



QUANTITY	A	B	MARK

MANUFACTURED FROM 45 x 45 x 2
 GALVANISED ANGLE.
 ALL HOLES 18mm Ø

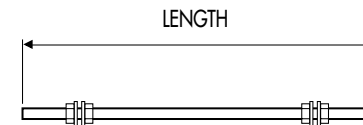
APEX TIES



QUANTITY	A	B	MARK

MANUFACTURED FROM M12 Ø ALLTHREAD
 SUPPLIED WITH NUTS AND WASHERS

THREADED ROD



QUANTITY	LENGTH	MARK

COMPANY		DRAWN BY	DRAWING No	REVISION No	
COMPANY ORDER No	CONTRACT No	DATE			



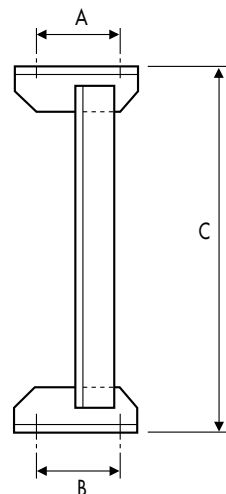
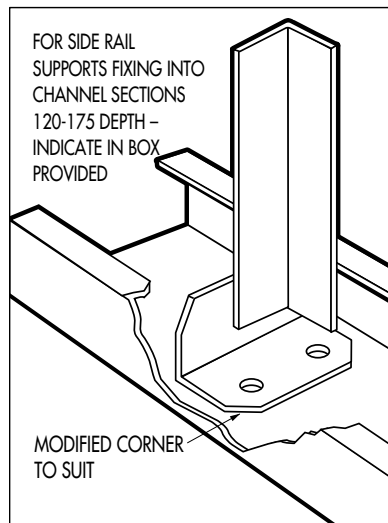
Albion Sections Limited

COLD ROLLED SECTIONS FOR THE CONSTRUCTION & ENGINEERING INDUSTRIES
 Albion Road, West Bromwich, West Midlands, B70 8BD
 Telephone: 0121-553 1877 Fax: 0121-553 5507

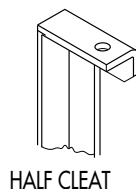
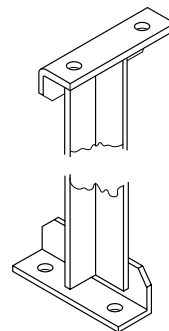
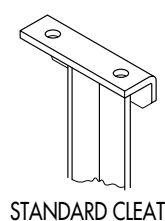
STANDARD ORDER SHEET 11

ASL Ref:

SIDE RAIL SUPPORTS & DIAGONAL TIE WIRES

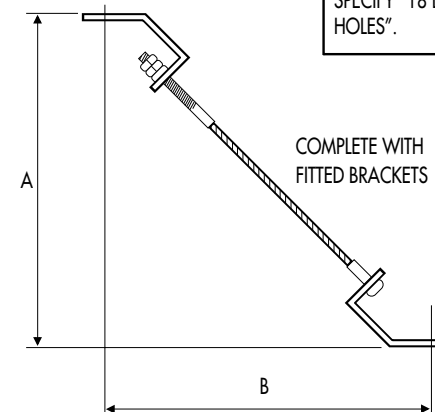


ALTERNATIVE END CLEAT TYPES



END CLEAT TURNED THROUGH 90°. GENERALLY USED WHEN FIXING SIDE RAIL SUPPORTS BETWEEN SIDE RAIL AND EAVES BEAM. TOP CLEAT IS FIXED AT 90° TO BOTTOM CLEAT

DIAGONAL TIE WIRES



NOTE: WHEN STRUTS ARE USED WITH COUNTERSUNK HOLES IN C SECTIONS SPECIFY "18 DIAMETER HOLES".

QUANTITY	A	B	C	HOLE DIA.	MARK	CHANNELS 120-175

CUSTOMER TO INDICATE WHEN ALTERNATIVE END CLEAT REQUIRED

NOTE: WHEN SIDE RAIL SUPPORTS ARE USED IN CONJUNCTION WITH DIAGONAL TIE WIRES AT A MID POINT LOCATION (SEE TECHNICAL MANUAL PAGE 22) THE ACTUAL OVERALL LENGTH WILL BE RAIL CENTRES LESS 7mm. FOR SIDE RAIL SUPPORTS USED AT INTERMEDIATE AND THIRD POINT LOCATION (SEE TECHNICAL MANUAL PAGE 23) THE ACTUAL OVERALL LENGTH WILL BE RAIL CENTRES LESS THICKNESS OF RAIL.

QUANTITY	A	B	MARK

COMPANY

DRAWN BY

DRAWING No

REVISION No

COMPANY ORDER No

CONTRACT No

DATE





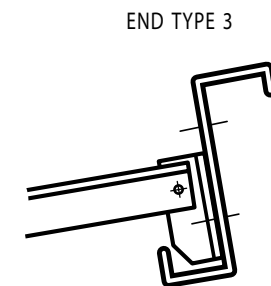
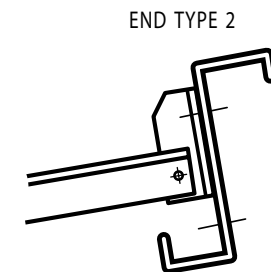
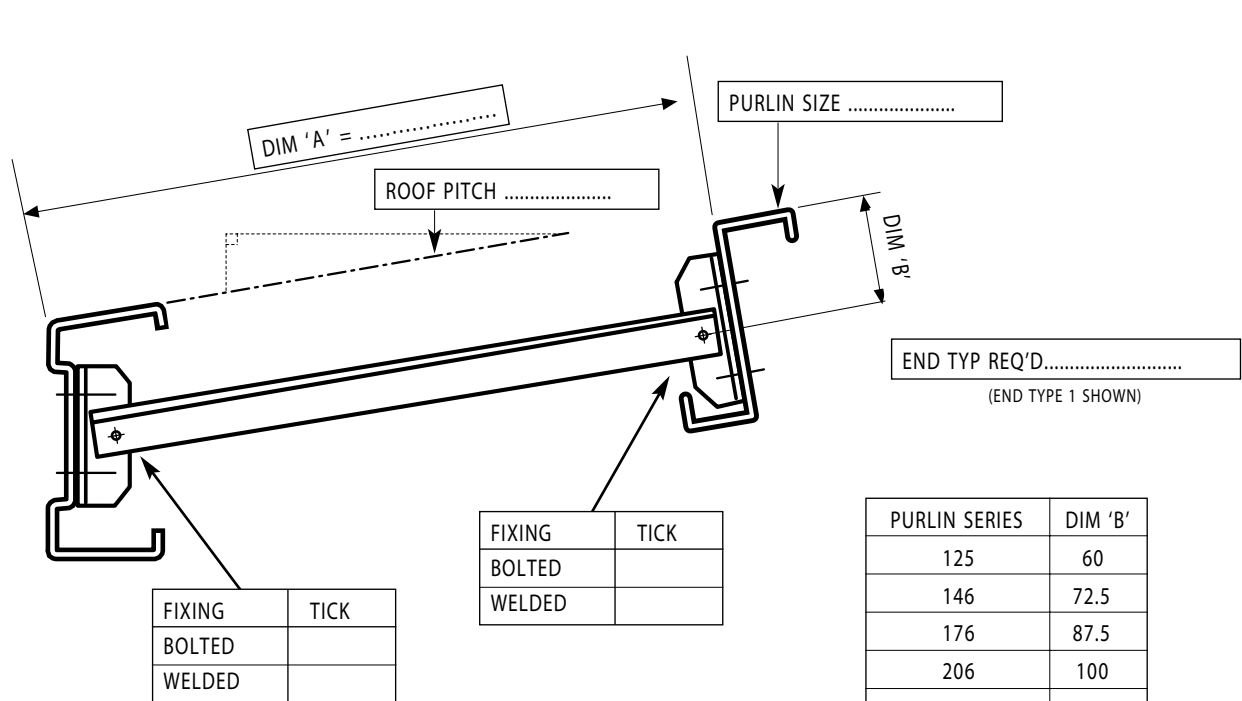
Albion Sections Limited

COLD ROLLED SECTIONS FOR THE CONSTRUCTION & ENGINEERING INDUSTRIES
 Albion Road, West Bromwich, West Midlands, B70 8BD
 Telephone: 0121-553 1877 Fax: 0121-553 5507

STANDARD ORDER SHEET 12

EAVES STRUTS

ASL Ref:



PURLIN SERIES	DIM 'B'
125	60
146	72.5
176	87.5
206	100
226	112.5
246	120
266	132.5
307	150
341	172.5
401	200

Quantity	
Mark	

NOTE: End cleats supplied welded as standard may be bolted if required

If you have any queries with this drawings contents please contact:

COMPANY		DRAWN BY	DRAWING No	REVISION No	
COMPANY ORDER No	CONTRACT No	DATE			



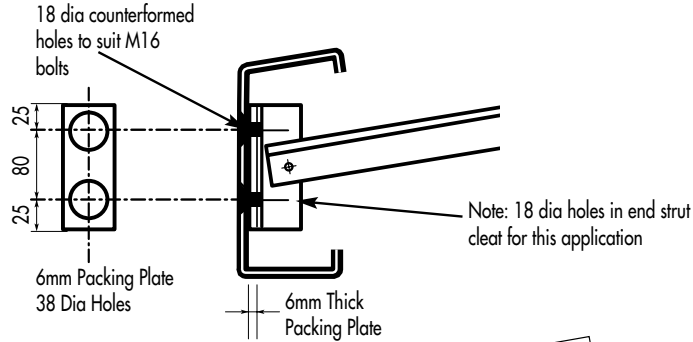
Albion Sections Limited

COLD ROLLED SECTIONS FOR THE CONSTRUCTION & ENGINEERING INDUSTRIES
 Albion Road, West Bromwich, West Midlands, B70 8BD
 Telephone: 0121-553 1877 Fax: 0121-553 5507

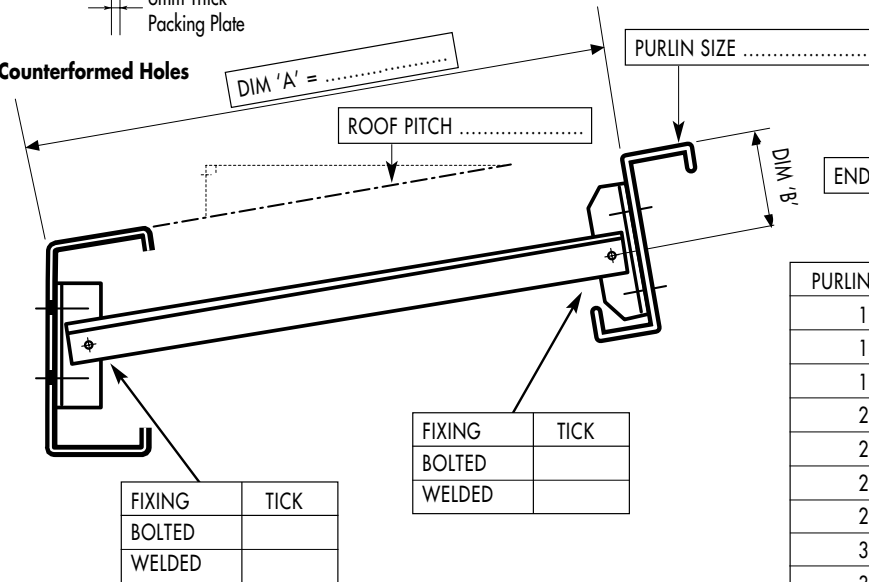
ASL Ref:

STANDARD ORDER SHEET 13

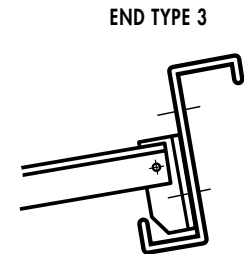
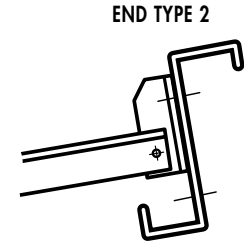
EAVES CHANNEL STRUTS



Alternative - Counterformed Holes



END TYP REQ'D.....
 (END TYPE 1 SHOWN)



PURLIN SERIES	DIM 'B'
125	60
146	72.5
176	87.5
206	100
226	112.5
246	120
266	132.5
307	150
341	172.5
401	200

Quantity		Counterformed Holes in Eaves Channel (Please tick)	Yes
Mark			No

NOTE: End cleats supplied welded as standard may be bolted if required

COMPANY		DRAWN BY	DRAWING No	REVISION No	
COMPANY ORDER No	CONTRACT No	DATE			



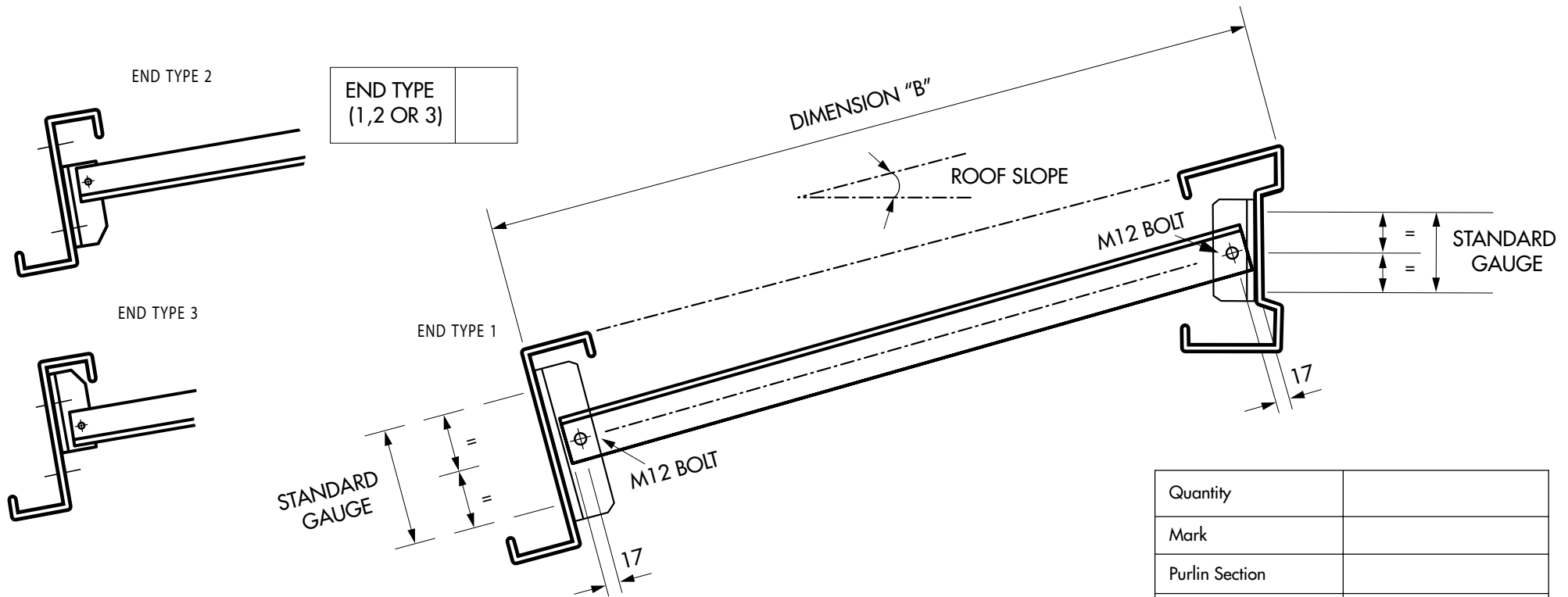
Albion Sections Limited

COLD ROLLED SECTIONS FOR THE CONSTRUCTION & ENGINEERING INDUSTRIES
 Albion Road, West Bromwich, West Midlands, B70 8BD
 Telephone: 0121-553 1877 Fax: 0121-553 5507

STANDARD ORDER SHEET 14

RIDGE STRUTS

ASL Ref:



End cleat details as standard
 bolted strut - see technical manual Page 22

Quantity	
Mark	
Purlin Section	
Eave Beam Section	
Dimension 'B'	
Roof Slope	
Mitre (146 + 176)	YES NO

COMPANY		DRAWN BY	DRAWING No	REVISION No	
COMPANY ORDER No	CONTRACT No	DATE			



Albion Sections Limited

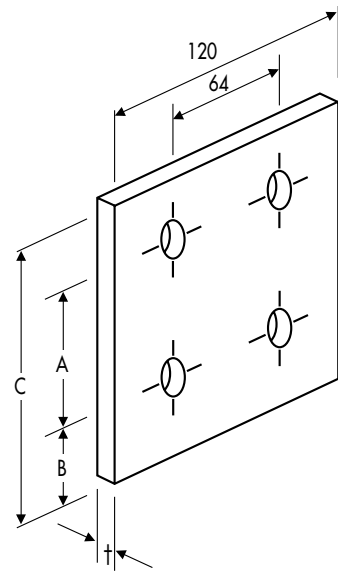
COLD ROLLED SECTIONS FOR THE CONSTRUCTION & ENGINEERING INDUSTRIES
Albion Road, West Bromwich, West Midlands, B70 8BD
Telephone: 0121-553 1877 Fax: 0121-553 5507

STANDARD ORDER SHEET 15

STANDARD CLEATS

ASL Ref:

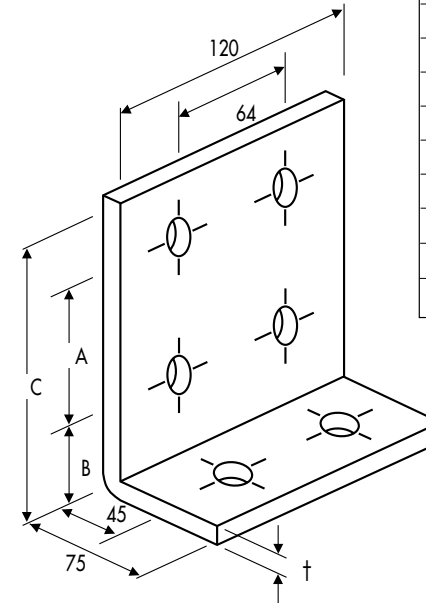
WELD ON CLEATS



SECTION REF C & Zed	A	B	C	†	Hole Dia
125	60	40	125	6	14 or 18
146	65	50	140	6	14 or 18
176	95	50	170	6	14 or 18
206	115	52.5	192	6	14 or 18
226	115	65	205	6	14 or 18

MARK No	SECTION	No REQD	HOLE DIA

BOLT ON CLEATS



SECTION REF C & Zed	A	B	C	†	Hole Dia
125	60	40	125	6	14 or 18
146	65	50	140	6	14 or 18
176	95	50	170	6	14 or 18
206	115	52.50	192	6	14 or 18
226	115	65	205	6	14 or 18
246	150	55	230	8	14 or 18
266	165	60	250	10	18
307	200	60	285	10	18
341	245	60	330	10	18
401	300	60	385	10	18

MARK No	SECTION	No REQD	HOLE DIA

GENERAL NOTES: ALL HOLES 18mm FOR 16mm BOLTS. MATERIAL - MILD STEEL. FINISH - NATURAL.

COMPANY

DRAWN BY

DRAWING No

REVISION No

COMPANY ORDER No

CONTRACT No

DATE





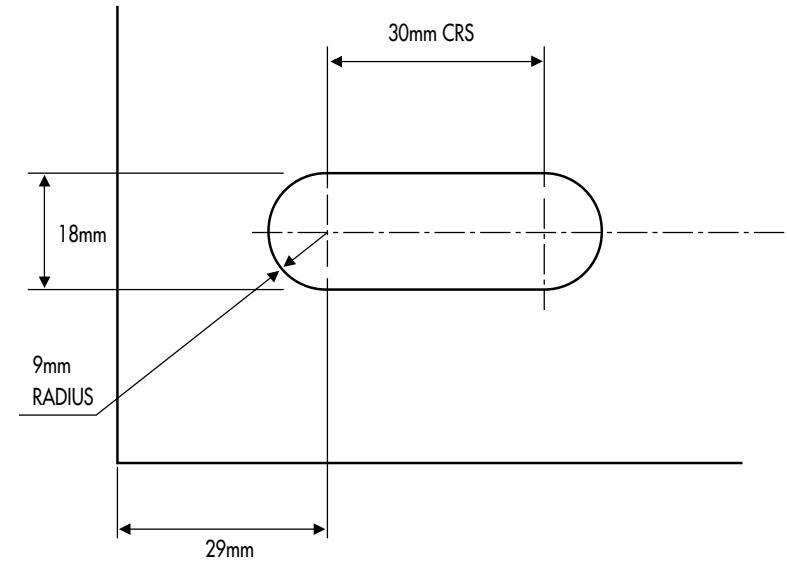
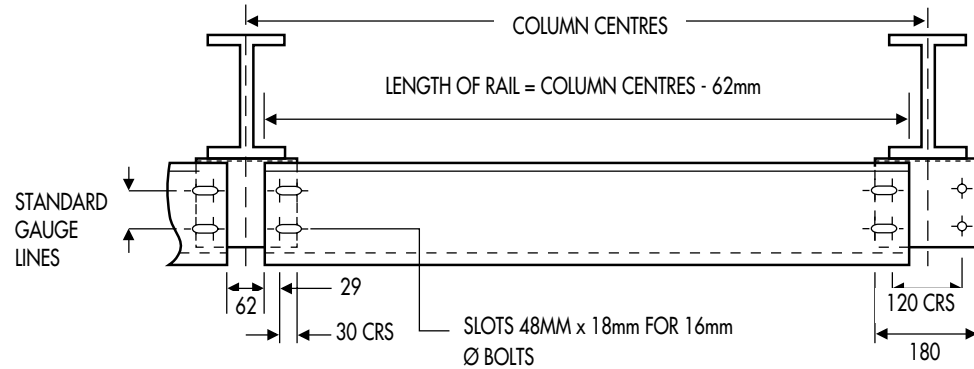
Albion Sections Limited

COLD ROLLED SECTIONS FOR THE CONSTRUCTION & ENGINEERING INDUSTRIES
 Albion Road, West Bromwich, West Midlands, B70 8BD
 Telephone: 0121-553 1877 Fax: 0121-553 5507

STANDARD ORDER SHEET 16

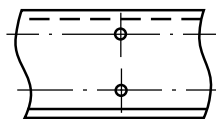
ASL Ref:

FIRE RESTRAINT SIDE RAIL

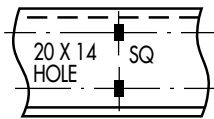


STANDARD PIERCING OPTIONS

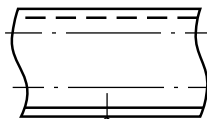
ALL BELOW DIMENSIONS TO C/L HOLE



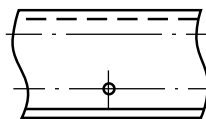
DOUBLE HOLE



SAG BAR & RAIL
SUPPORT HOLES



14 DIA FLANGE HOLE BOTTOM
FLANGE ONLY
33 BMK



SINGLE HOLE

COMPANY		DRAWN BY	DRAWING No	REVISION No	
COMPANY ORDER No	CONTRACT No	DATE			



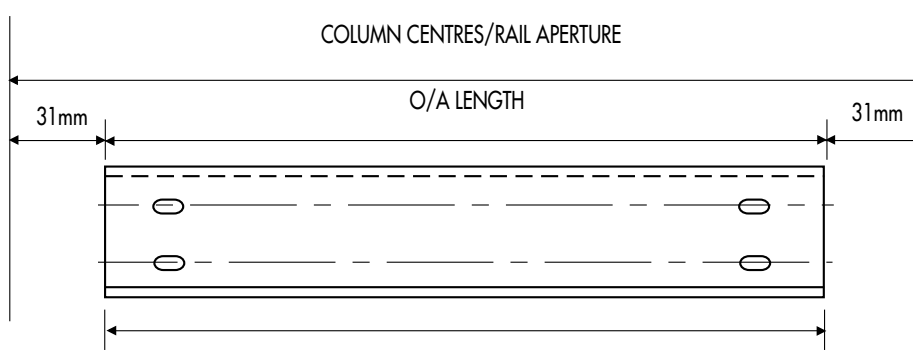
Albion Sections Limited
 COLD ROLLED SECTIONS FOR THE CONSTRUCTION & ENGINEERING INDUSTRIES
 Albion Road, West Bromwich, West Midlands, B70 8BD
 Telephone: 0121-553 1877 Fax: 0121-553 5507

ASL Ref:

STANDARD ORDER SHEET 17

FIRE RESTRAINT SIDE RAIL

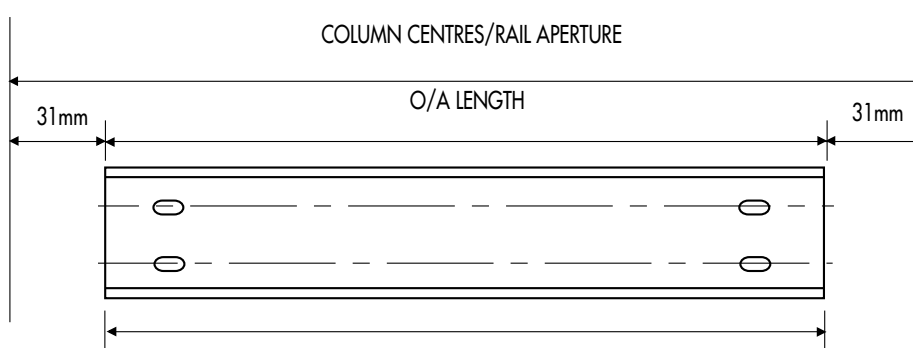
Z SECTION



NO.	AS DRAWN	MARK
NO.	OPPOSITE HAND	MARK

SECTION NUMBER REFERENCE

C SECTION



COMPANY		DRAWN BY	DRAWING No	REVISION No	
COMPANY ORDER No	CONTRACT No	DATE			

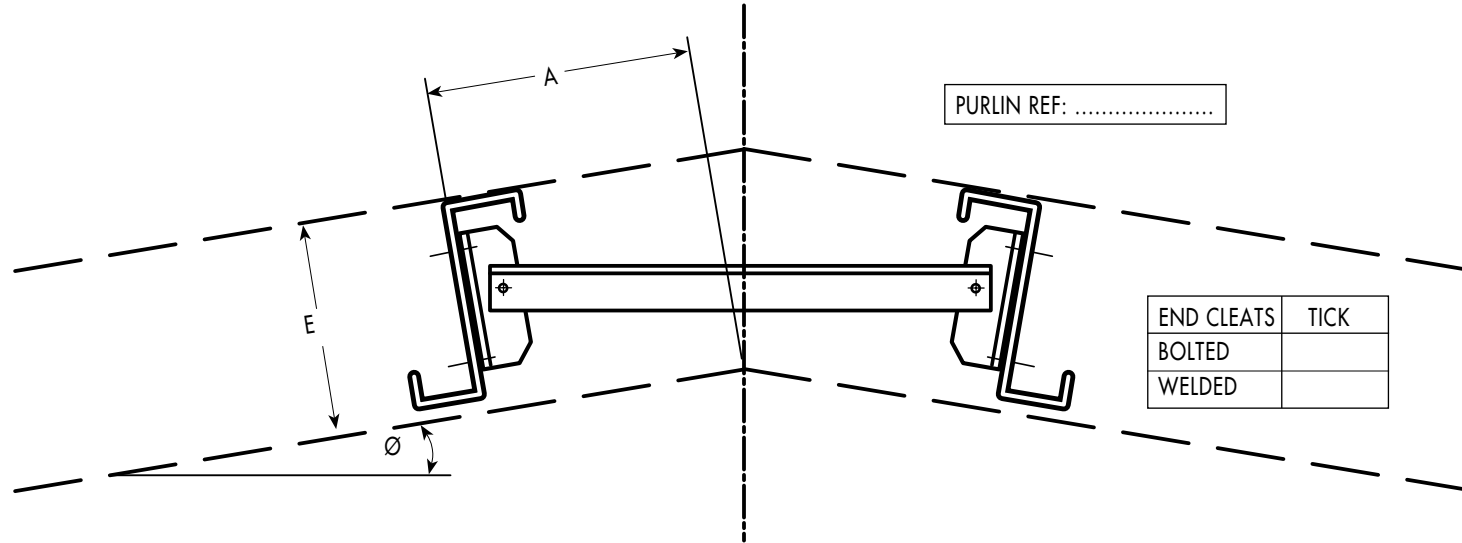


Albion Sections Limited
 COLD ROLLED SECTIONS FOR THE CONSTRUCTION & ENGINEERING INDUSTRIES
 Albion Road, West Bromwich, West Midlands, B70 8BD
 Telephone: 0121-553 1877 Fax: 0121-553 5507

ASL Ref:

STANDARD ORDER SHEET 18

APEX STRUT ANGLE TYPE



Quantity	Mk	A	E	Ø

COMPANY

DRAWN BY

DRAWING No

REVISION No

COMPANY ORDER No

CONTRACT No

DATE



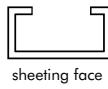
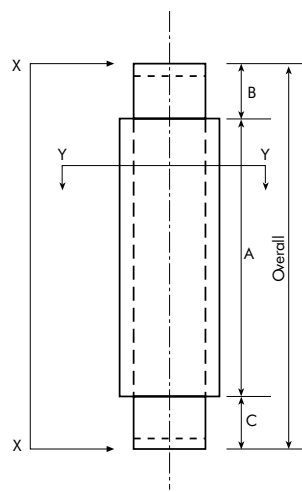


Albion Sections Limited
 COLD ROLLED SECTIONS FOR THE CONSTRUCTION & ENGINEERING INDUSTRIES
 Albion Road, West Bromwich, West Midlands, B70 8BD
 Telephone: 0121-553 1877 Fax: 0121-553 5507

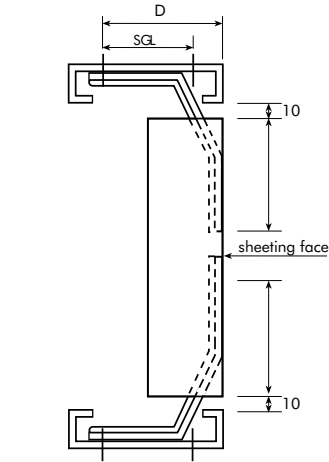
ASL Ref:

STANDARD ORDER SHEET 19

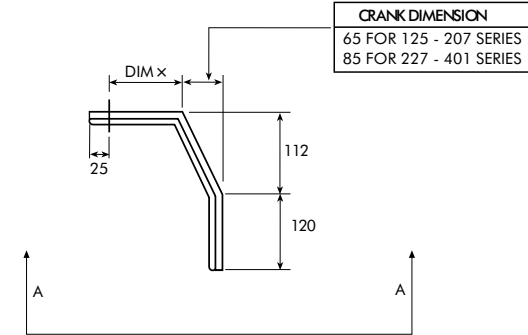
CHANNEL JOINT RAIL



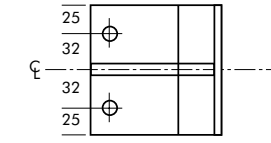
view on YY



View on arrow 'XX' is an example of CJR fixed between rails. For other applications refer to zed fixings shown in technical manual.



CRANK DIMENSION
 65 FOR 125 - 207 SERIES
 85 FOR 227 - 401 SERIES



view on AA

Material: 3mm galvanised
 Holes: 18mm diameter

Overall	Qty	Mk	A	B	C	D	Gauge

Quantity	Mk	DIM x	Crank Dimension (Delete as appropriate)
			65/85
			65/85
			65/85
			65/85
			65/85

COMPANY

DRAWN BY

DRAWING No

REVISION No

COMPANY ORDER No

CONTRACT No

DATE



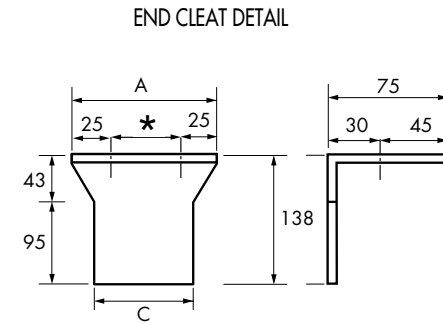
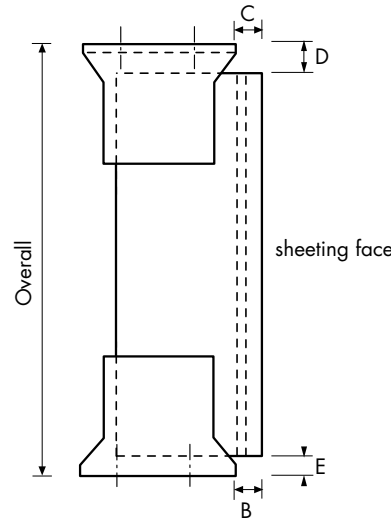
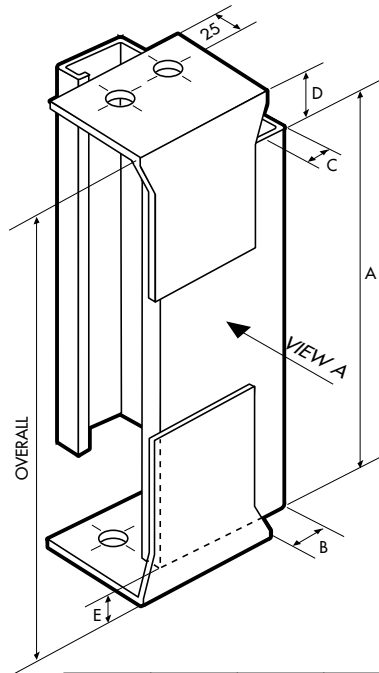


Albion Sections Limited
 COLD ROLLED SECTIONS FOR THE CONSTRUCTION & ENGINEERING INDUSTRIES
 Albion Road, West Bromwich, West Midlands, B70 8BD
 Telephone: 0121-553 1877 Fax: 0121-553 5507

ASL Ref:

STANDARD ORDER SHEET 20

CLADDING JOINT RAIL



* = 65mm or 115mm

Note: Standard gauge for CJR section 1.6mm or 2.0mm

Overall	Qty	Mk	A	B	C	D	E	* Delete as appropriate	Gauge 1.6 or 2.0
								65 / 115	
								65 / 115	
								65 / 115	
								65 / 115	
								65 / 115	

COMPANY

DRAWN BY

DRAWING No

REVISION No

COMPANY ORDER No

CONTRACT No

DATE





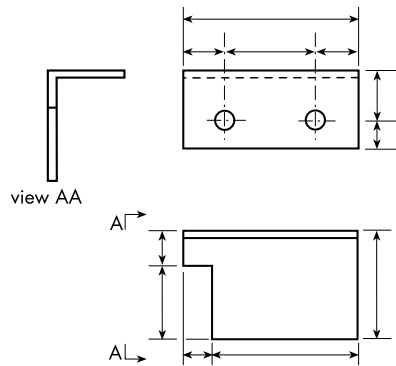
Albion Sections Limited

COLD ROLLED SECTIONS FOR THE CONSTRUCTION & ENGINEERING INDUSTRIES
 Albion Road, West Bromwich, West Midlands, B70 8BD
 Telephone: 0121-553 1877 Fax: 0121-553 5507

ASL Ref:

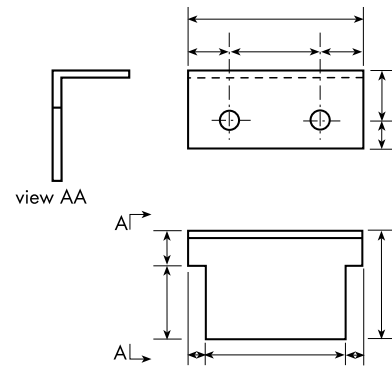
STANDARD ORDER SHEET 21

NON STANDARD CLEATS



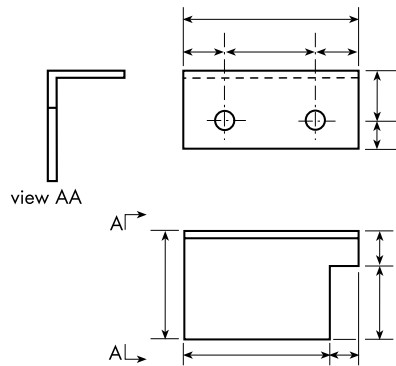
CJR
(connection to horizontal z or c)

QTY	Mk No.



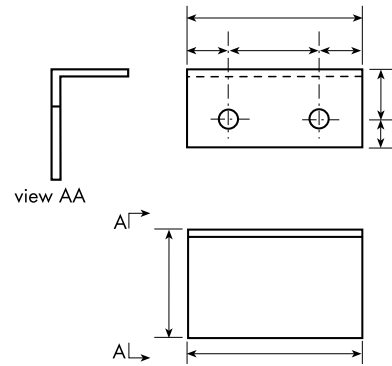
Vertical/horizontal zeds/channels

QTY	Mk No.



CJR

QTY	Mk No.



Trimmer cleats

QTY	Mk No.

ALL CLEATS
 Hole diameter: 14mm or 18mm
 (Specify)

MATERIAL THICKNESS

GUAGE	TICK REQ.
2mm	
2.5mm	
3.0mm	

COMPANY

DRAWN BY

DRAWING No

REVISION No

COMPANY ORDER No

CONTRACT No

DATE





Albion Sections Limited

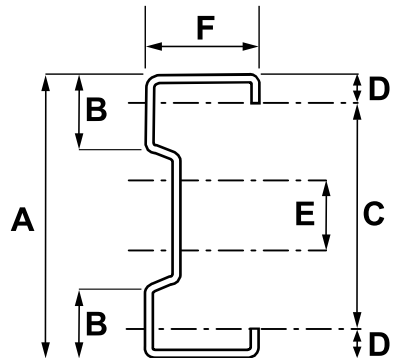
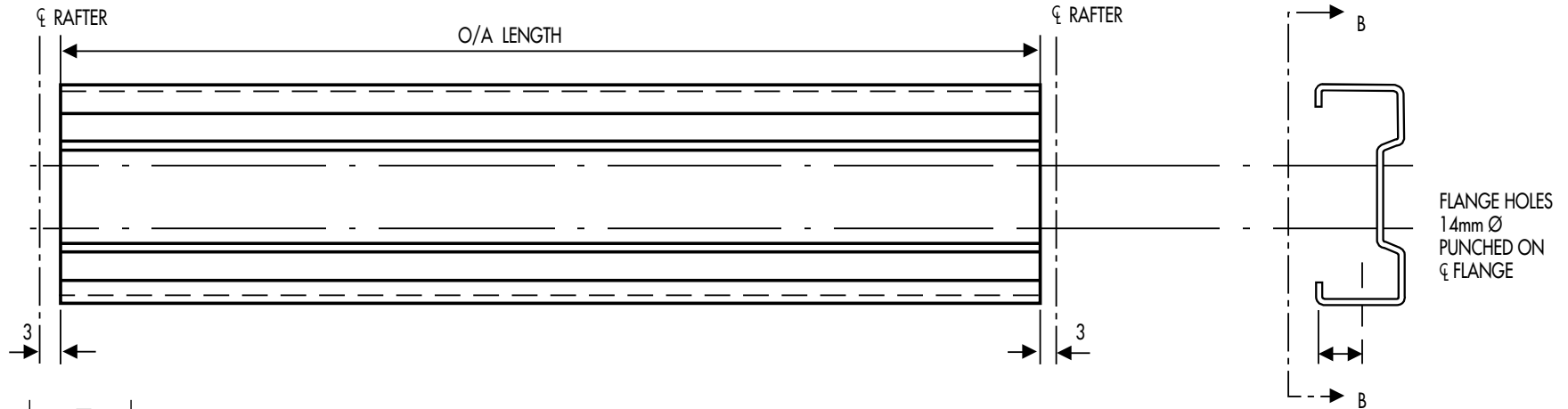
COLD ROLLED SECTIONS FOR THE CONSTRUCTION & ENGINEERING INDUSTRIES
 Albion Road, West Bromwich, West Midlands, B70 8BD
 Telephone: 0121-553 1877 Fax: 0121-553 5507

STANDARD ORDER SHEET 22

SIGMA PURLIN

ASL Ref:

VIEW ON BB



Section Ref	A mm	B mm	C mm	D mm	E mm	F mm	Outer web holes
ASB200	200	45	154	23	40	62.5	14
ASB225	225	45	179	23	60	62.5	14
ASB240	240	50	190	25	65	62.5	14
ASB265	265	60	205	30	75	62.5	18
ASB300	300	60	240	30	95	75.0	18

INNER WEB HOLES 14MM DIA FOR STRUTS OR 14MM WIDE X 20MM LONG RECTANGULAR FOR SPEED FIX SAG RODS

SECTION NUMBER REFERENCE

NO.	AS DRAWN	MARK
NO.	OPPOSITE HAND	MARK

COMPANY

DRAWN BY

DRAWING No

REVISION No

COMPANY ORDER No

CONTRACT No

DATE





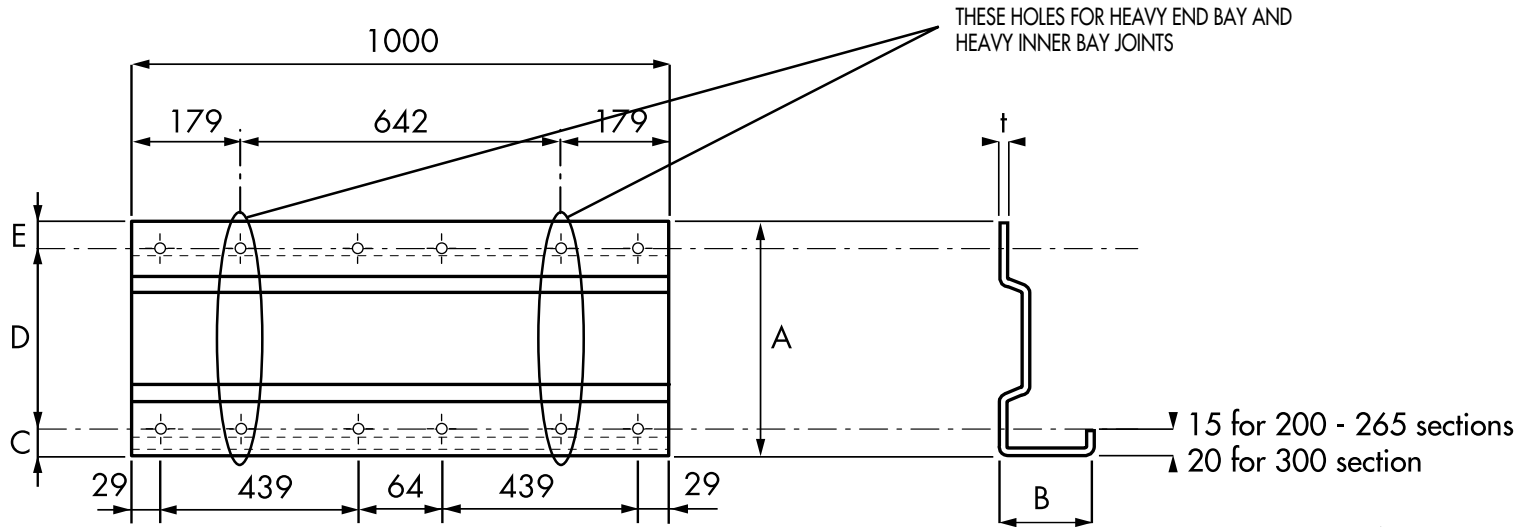
Albion Sections Limited

COLD ROLLED SECTIONS FOR THE CONSTRUCTION & ENGINEERING INDUSTRIES
 Albion Road, West Bromwich, West Midlands, B70 8BD
 Telephone: 0121-553 1877 Fax: 0121-553 5507

STANDARD ORDER SHEET 23

ASL Ref:

SIGMA PURLIN SLEEVES



VIEW ON AA

Section Ref	A mm	B mm	C mm	D mm	E mm	Hole dia
ASB200	203	80	29	154	20	14
ASB225	228	80	29	179	20	14
ASB240	243	80	31	190	22	14
ASB265	266	80	36	205	25	18
ASB300	301	95	36	240	25	18

Sleeve gauge t

Purlin gauge	Sleeve gauge
up to 1.8 mm	2.0 mm
over 1.8mm up to 2.3mm	2.5 mm
over 2.3mm up to 3.0mm	3.0 mm

NOTE - For Heavy End Bay systems use the thickness purlin to determine sleeve thickness

SECTION	QUANTITY	GAUGE	MARK

COMPANY		DRAWN BY	DRAWING No	REVISION No	
COMPANY ORDER No	CONTRACT No	DATE			



Albion Sections Limited

COLD ROLLED SECTIONS FOR THE CONSTRUCTION & ENGINEERING INDUSTRIES
Albion Road, West Bromwich, West Midlands, B70 8BD
Telephone: 0121-553 1877 Fax: 0121-553 5507

STANDARD ORDER SHEET 24

SIGMA PURLIN ACCESSORIES

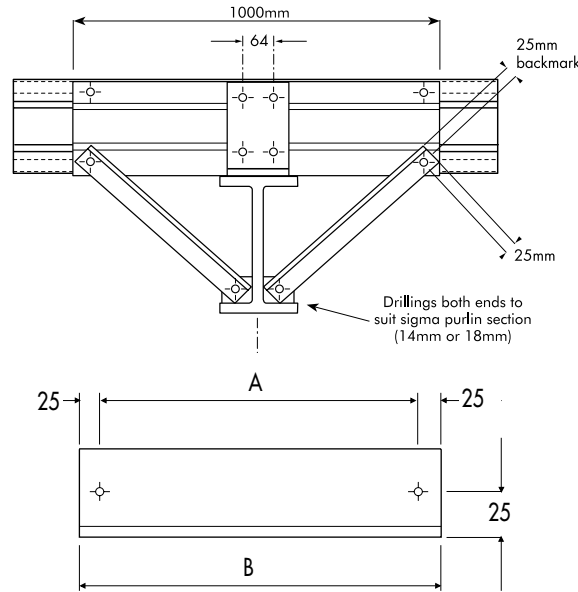
ASL Ref:

SPEED FIX ANTI SAG BARS



QUANTITY	PURLIN CRS	MARK

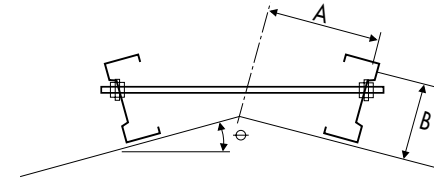
RAFTER/COLUMN STAYS



QUANTITY	A	B	18mm dia holes	MARK

MANUFACTURED FROM 45 x 45 x 2 GALVANISED ANGLE.

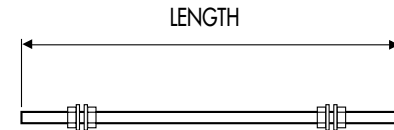
APEX TIES



QUANTITY	A	B	MARK

MANUFACTURED FROM M12 Ø ALLTHREAD SUPPLIED WITH NUTS AND WASHERS

THREADED ROD



QUANTITY	LENGTH	MARK

COMPANY		DRAWN BY	DRAWING No	REVISION No	
COMPANY ORDER No	CONTRACT No	DATE			



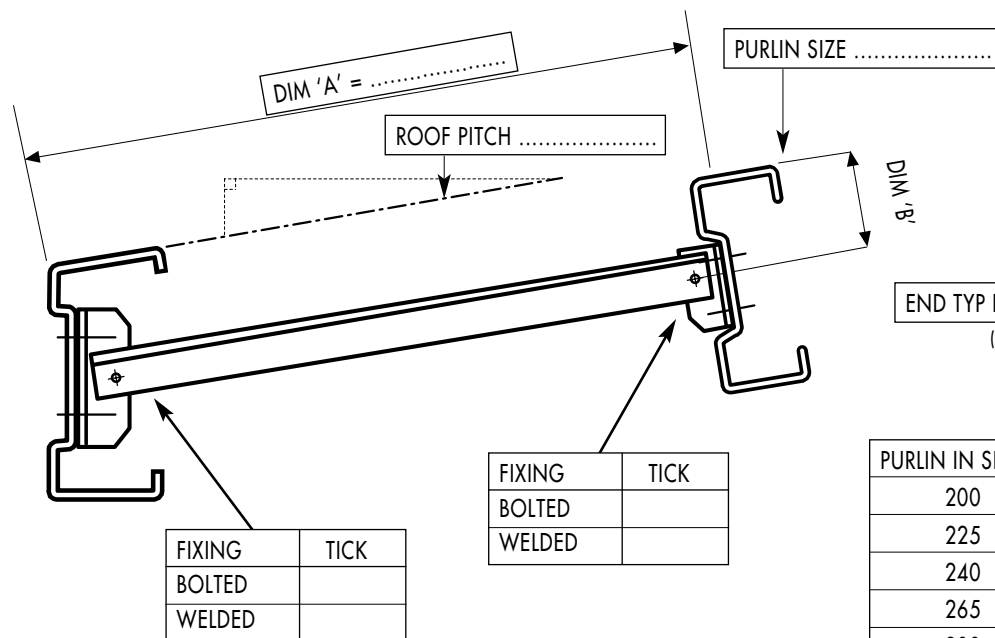
Albion Sections Limited

COLD ROLLED SECTIONS FOR THE CONSTRUCTION & ENGINEERING INDUSTRIES
 Albion Road, West Bromwich, West Midlands, B70 8BD
 Telephone: 0121-553 1877 Fax: 0121-553 5507

STANDARD ORDER SHEET 25

ASL Ref:

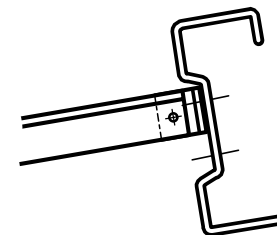
EAVES STRUTS TO SIGMA PURLINS



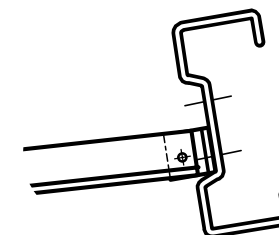
END TYP REQ'D.....
 (END TYPE 1 SHOWN)

PURLIN IN SERIES	DIM 'B'
200	100
225	112.5
240	120
265	132.5
300	150

END TYPE Sigma 2



END TYPE Sigma 3



NOTE: End cleats supplied welded as standard may be bolted if required

COMPANY

DRAWN BY

DRAWING No

REVISION No

COMPANY ORDER No

CONTRACT No

DATE





Albion Sections Limited

COLD ROLLED SECTIONS FOR THE CONSTRUCTION & ENGINEERING INDUSTRIES
 Albion Road, West Bromwich, West Midlands, B70 8BD
 Telephone: 0121-553 1877 Fax: 0121-553 5507

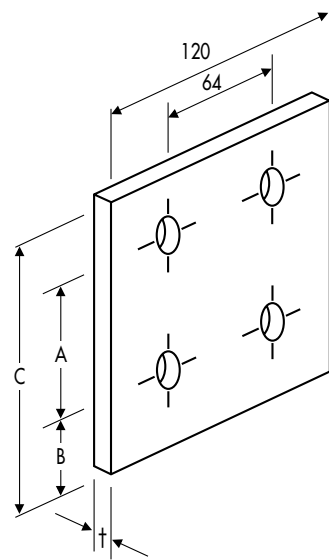
STANDARD ORDER SHEET 26

ASL Ref:

STANDARD CLEATS FOR SIGMA PURLINS

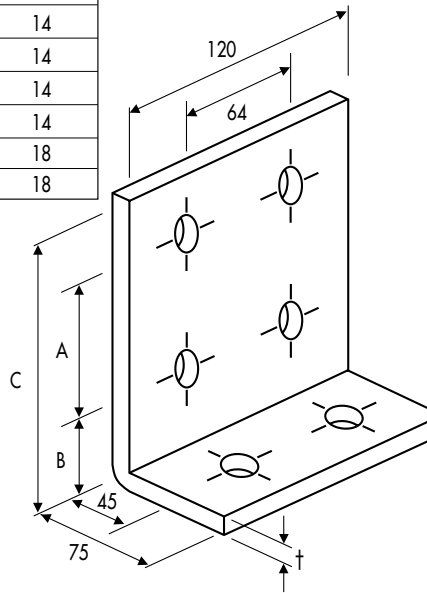
WELD ON CLEATS

BOLT ON CLEATS



Purlin Series	A	B	C	Thickness	Hole dia
All 200	154	35	209	6	14
22512-22516	179	35	234	6	14
22518-22525	179	35	234	8	14
24015-24018	190	37	247	8	14
24020-24028	190	37	247	10	14
All 265	205	42	272	10	18
All 300	240	42	307	10	18

MARK No	SECTION	No REQD



MARK No	SECTION	No REQD

GENERAL NOTES: MATERIAL - MILD STEEL. FINISH - NATURAL.

COMPANY		DRAWN BY		DRAWING No	REVISION No	
COMPANY ORDER No	CONTRACT No	DATE				



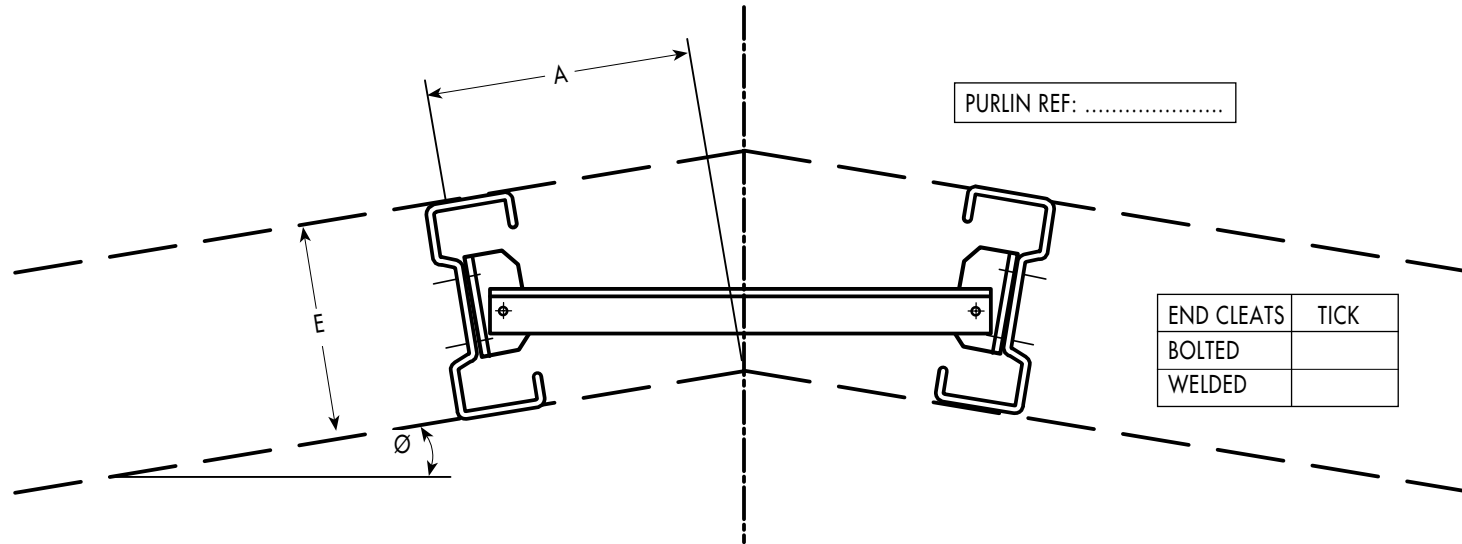
Albion Sections Limited

COLD ROLLED SECTIONS FOR THE CONSTRUCTION & ENGINEERING INDUSTRIES
 Albion Road, West Bromwich, West Midlands, B70 8BD
 Telephone: 0121-553 1877 Fax: 0121-553 5507

STANDARD ORDER SHEET 27

ASL Ref:

**APEX STRUT ANGLE TYPE
 FOR SIGMA PURLINS**



Quantity	Mk	A	E	Ø

COMPANY		DRAWN BY		DRAWING No	REVISION No	
COMPANY ORDER No	CONTRACT No	DATE				



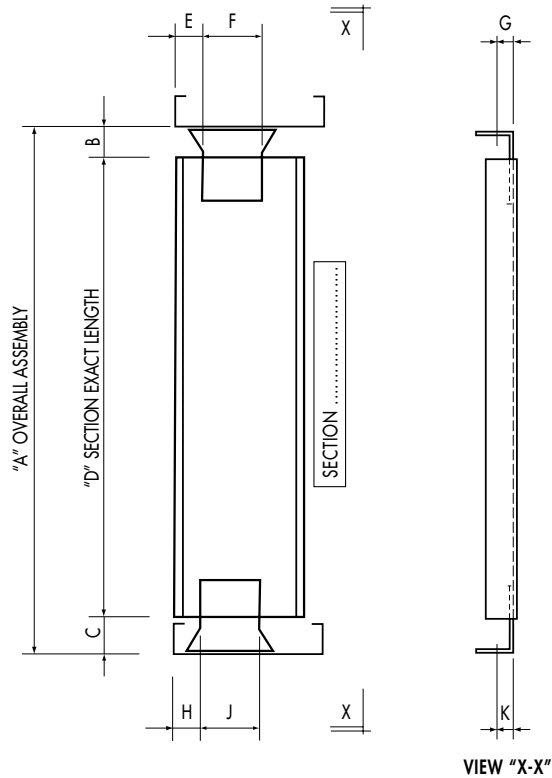
Albion Sections Limited

COLD ROLLED SECTIONS FOR THE CONSTRUCTION & ENGINEERING INDUSTRIES
 Albion Road, West Bromwich, West Midlands, B70 8BD
 Telephone: 0121-553 1877 Fax: 0121-553 5507

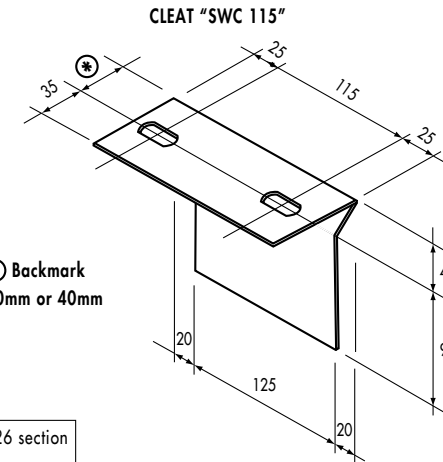
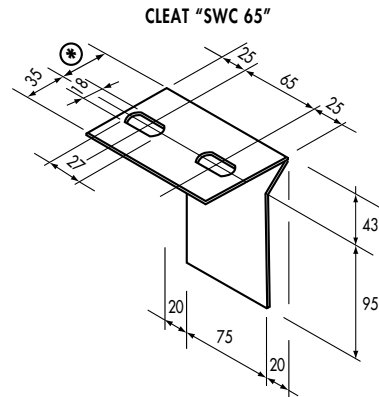
STANDARD ORDER SHEET 28

ASL Ref:

VERTICAL CEE SECTION CLADDING RAIL



NOTE: Dimensions E & H should be standard rail gauge line



⊛ Backmark
30mm or 40mm

Use SWC 65 to connect to rails up to and including 226 section
 Use SWC 115 to connect to rails 246 and above

NOTE: Cleats SWC 65 & SWC 115 are 3mm thick pre-galvanised steel grade S450 with 2 No. 18 wide - *27 long slot holes

No	Mark	As drawn or opposite hand	A	B	C	D	E	F	G	H	J	K
								65	30		65	30
								115	40		115	40
								65	30		65	30
								115	40		115	40
								65	30		65	30
								115	40		115	40
								65	30		65	30
								115	40		115	40
								65	30		65	30
								115	40		115	40

WHERE TWO DIMENSIONS ARE SHOWN DELETE AS APPROPRIATE

COMPANY		DRAWN BY		DRAWING No		REVISION No		
COMPANY ORDER No		DATE						
CONTRACT No								



Albion Sections Limited

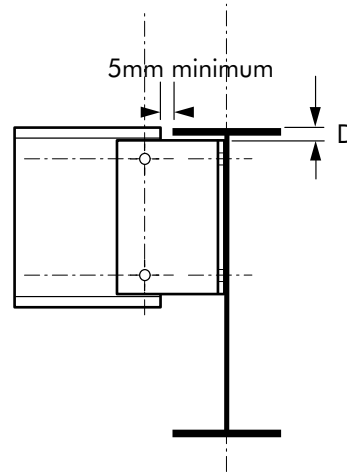
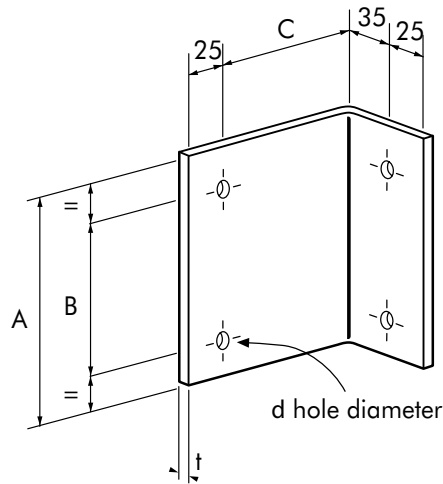
COLD ROLLED SECTIONS FOR THE CONSTRUCTION & ENGINEERING INDUSTRIES
 Albion Road, West Bromwich, West Midlands, B70 8BD
 Telephone: 0121-553 1877 Fax: 0121-553 5507

STANDARD ORDER SHEET 29

ASL Ref:

**FLOOR BEAM CONNECTIONS
 - STANDARD INSET CLEATS**

INSET CLEAT DETAILS



Section Ref	Cleat Ref	A mm	B mm	C mm	D mm	t mm	d mm
146	MC146	107	65	100	19	4/5	14
176	MC176	137	95	115	19	4/5	14
206	MC206	157	115	130	21	4/5	14
226	MC226	157	115	130	34	4/5	14
246	MC246	192	150	130	24	4/5	14
266	MC266	215	165	130	25	4/5	18
307	MC307	250	200	130	25	5/6	18
341	MC341	295	245	130	25	5/6	18
401	MC401	350	300	130	25	5/6	18

No. Cleats MC Required

COMPANY		DRAWN BY		DRAWING No	REVISION No	
COMPANY ORDER No	CONTRACT No	DATE				



Albion Sections Limited

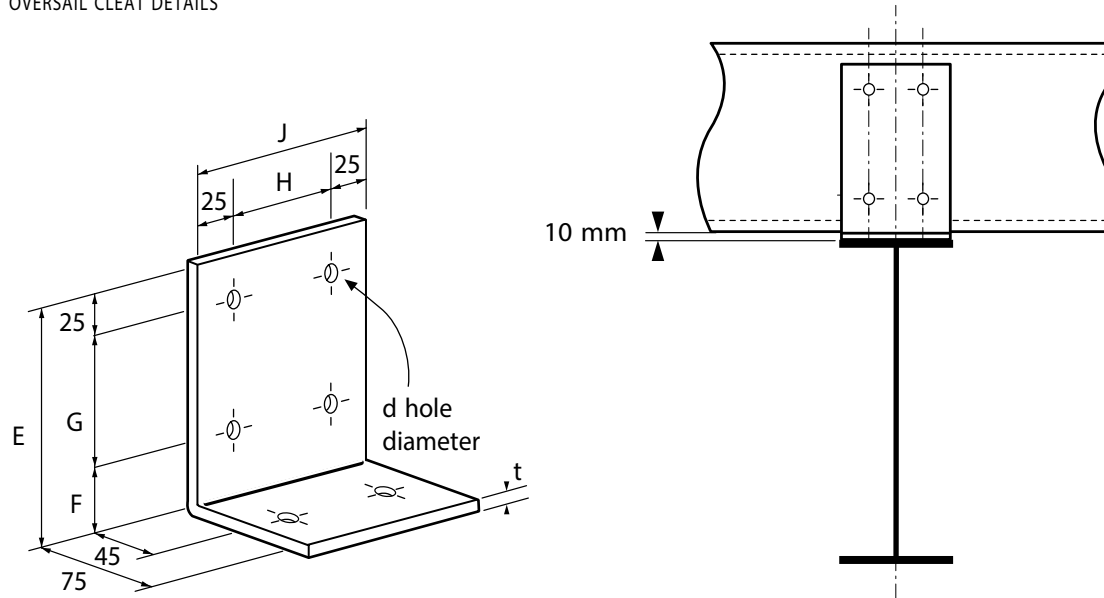
COLD ROLLED SECTIONS FOR THE CONSTRUCTION & ENGINEERING INDUSTRIES
 Albion Road, West Bromwich, West Midlands, B70 8BD
 Telephone: 0121-553 1877 Fax: 0121-553 5507

STANDARD ORDER SHEET 30

ASL Ref:

**FLOOR BEAM CONNECTIONS
 - STANDARD OVERSAIL CLEATS**


OVERSAIL CLEAT DETAILS



No. Cleats AC	Required
---------------	----------

Section Ref	Cleat Ref	E mm	F mm	G mm	H mm	J mm	t mm	d mm
146	AC146	140	50	65	64	114	6	14
176	AC176	170	50	95	64	114	6	14
206	AC206	192	52.5	115	64	114	6	14
226	AC226	205	65	115	64	114	6	14
246	AC246	230	55	150	64	114	8	14
266	AC266	250	60	165	64	114	10	18

Section Ref	Cleat Ref
307	THESE SECTIONS REQUIRE STIFFENED CLEAT NOT BY ALBION
341	
401	

COMPANY		DRAWN BY		DRAWING No	REVISION No	
COMPANY ORDER No	CONTRACT No	DATE				